

VALENCIA



Valencia with 2 drawers and tray cabinet in Sunset finish VV50, VNFS



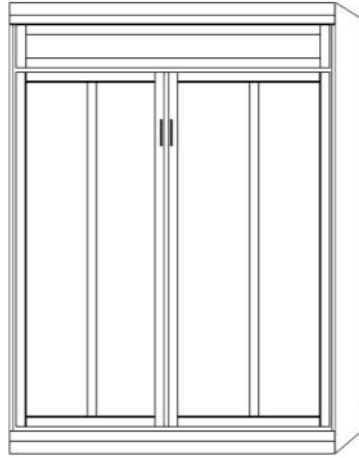
VALENCIA

FINISH OPTIONS

Cognac-R
 Caramel-B
 Bark Gray-BG
 Sunset-S
 Natural -N
 Maple-M
 Gray-G
 Cinnamon-E
 Espresso-D
 White-WH
 (WH —10% UP-Charge)

HARDWARE

#3 Nickel Bar
 #13 Bronze Bar
 #10 Cody Black
 #11 Cody Nickel
 #12 Cody Bronze
 #14 Cody Gold
 #15 Bridge Black
 #16 Bridge Bronze
 #17 Bridge Nickel
 #18 Bridge Gold



VV50 QUEEN

CLOSED— 65 x 17 x 90 OPEN —65 x 86 x 90

VV46 FULL

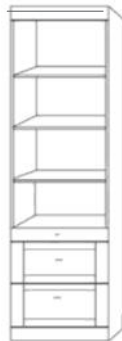
CLOSED— 59 x 17 x 85 OPEN —59 x 81 x 85

Can accommodate up to a 12" thick mattress



3 DRAWER

VTFS 16 X 85 _____
 VTQS 16 X 90 _____
 VPTF 24 X 85 _____
 VPTQ 24 X 90 _____
 VPGF 32 X 85 _____
 VPGQ 32 X 90 _____



2 DRAWER TRAY

VNFS 16 X 85 _____
 VNQS 16 X 90 _____
 VPNF 24 X 85 _____
 VPNQ 24 X 90 _____



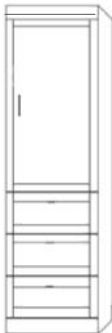
FILE PENCIL DRAWER

VLFS 16 X 85 _____
 VLQS 16 X 90 _____
 VPLF 24 X 85 _____
 VPLQ 24 X 90 _____



DOOR -TRAY- 2 DRAWERS

VPUF 24 X 85 _____
 VPUQ 24 X 90 _____



3 DRAWER-DOOR

VWFS 16 X 85 _____
 VWQS 16 X 90 _____
 VPWF 24 X 85 _____
 VPWQ 24 X 90 _____



2 DRAWER-PENCIL-DOOR

VXFS 16 X 85 _____
 VXQS 16 X 90 _____
 VPXF 24 X 85 _____
 VPIX 24 X 90 _____



OPEN DOOR

VDFS 16 X 85 _____
 VDQS 16 X 90 _____
 VPCF 24 X 85 _____
 VPCQ 24 X 90 _____



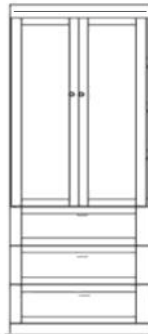
BOOKCASE

VBFS 16 X 85 _____
 VBQS 16 X 90 _____
 VPBF 24 X 85 _____
 VPBQ 24 X 90 _____



2-DOOR

VDFL 32 X 85 _____
 VDQL 32 X 90 _____



GUEST CHEST

VPWU 32 X 85 _____

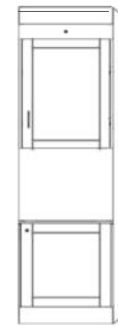
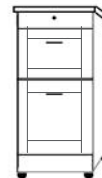
NIGHTSTAND

24 x 16 x 29
 VNS _____
 2 DRAWERS/PENCIL
 VNST _____
 2 DRAWERS/TRAY



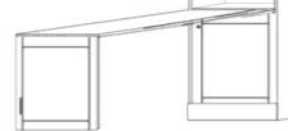
FILE CART

VFC \$ _____
 16.5 x 21.5 x 28

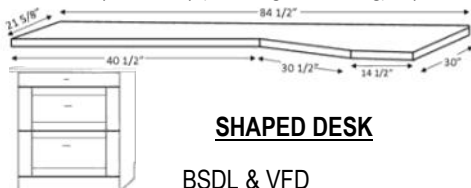


FOLDING DESK

VPAF 24 X 85 _____
 Desk is 48" Long
 Extends to 59"



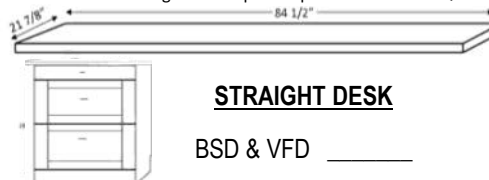
BSDL— Shaped Desktop (left or Right side facing) requires VDFL or



SHAPED DESK

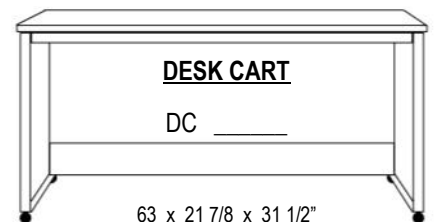
BSDL & VFD _____

BSD— Straight Desktop — requires VPCF or VPCQ



STRAIGHT DESK

BSD & VFD _____



DESK CART

DC _____

63 x 21 7/8 x 31 1/2"